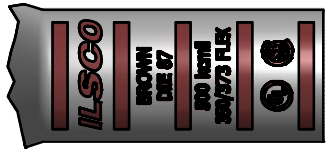
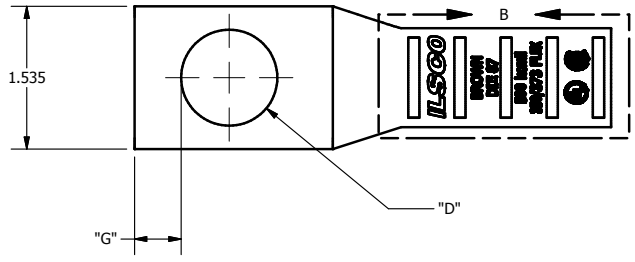


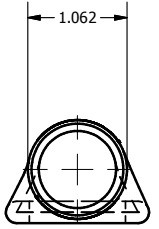
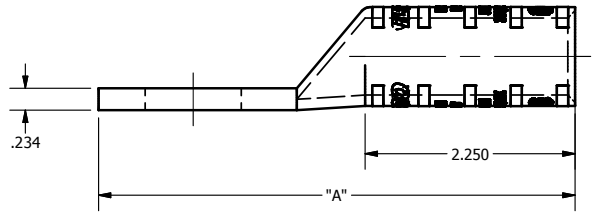
SCREW: NONE	MATERIAL: COPPER	REV: H
CAT. NO. SEE CHART	PLATING: EL-TIN	DRAWN BY: DW SCALE: NTS
INFORMATION SHEET: FORM 157	MARKING: SEE CHART	DATE 7/5/2007 SIZE: B

ILSCO
connections matter

DWG NO: Y1503-S
SHEET: 1 OF 1



DETAIL B
TOP AND BOTTOM INK MARKINGS ARE IDENTICAL
INK COLOR: BROWN



Catalog Number	"A"	"D"	"G"	TANG MARKING
CLNS-500-14	3.857	0.281	0.180	
CLNS-500-516	3.857	0.343	0.180	ILSCO, CLNS-500-516, 5/16, DIE 87, 500 kcmil, 350 /373 FLEX, UL, CSA
CLNS-500-38	3.857	0.406	0.211	ILSCO, CLNS-500-38, DIE 87, 500 kcmil, 350/373 FLEX, UL, CSA
CLNS-500-12	4.232	0.562	0.265	ILSCO, C-500-12, 1/2, 500 kcmil, 350/373 FLEX, DIE 87, UL, CSA
CLNS-500-58	4.419	0.656	0.343	ILSCO, CLNS-500-58, DIE 87, 500 kcmil, 350/373 FLEX, UL, CSA
CLNS-500-34	4.669	0.781	0.359	ILSCO, CLNS-500-34, DIE 87, 500 kcmil, 350/373 FLEX, UL, CSA
CLNS-500-78	4.919	0.906	0.437	
CLNS-500-1	5.107	1.031	0.500	

THE INFORMATION CONTAINED WITHIN THIS DOCUMENT IS PROPRIETARY TO ILSCO AND MAY NOT BE DISCLOSED WITHOUT PRIOR WRITTEN CONSENT